

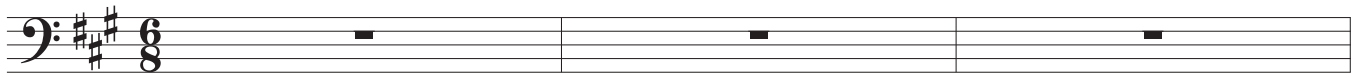
Cello

O Lamb of God, I Come

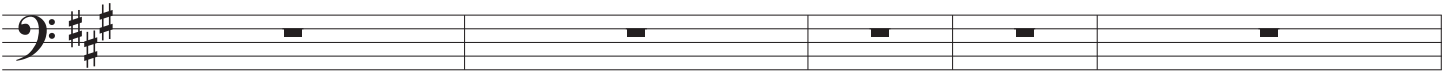
text by Charlotte Elliott, 1841

Jenny N. Richards

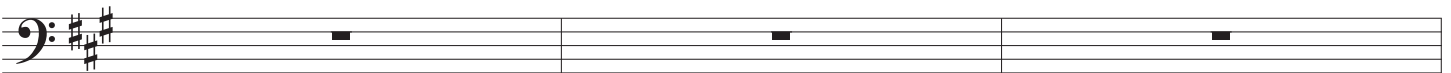
$\text{♩} = 96$



4



9



12



19



26



33



41



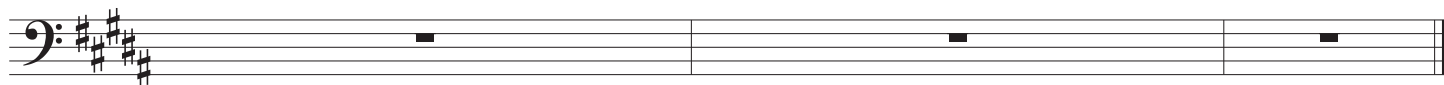
O Lamb of God, I Come

48



Musical notation for measures 48 to 54. The staff is in bass clef with a key signature of three sharps (F#, C#, G#). The melody consists of eighth notes with accents, followed by quarter notes and half notes. There are rests in measures 50, 52, 53, and 54.

55



Musical notation for measures 55 to 56. The staff is in bass clef with a key signature of three sharps (F#, C#, G#). It contains whole rests for the entire duration.